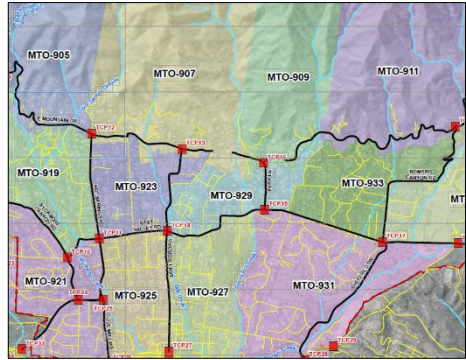



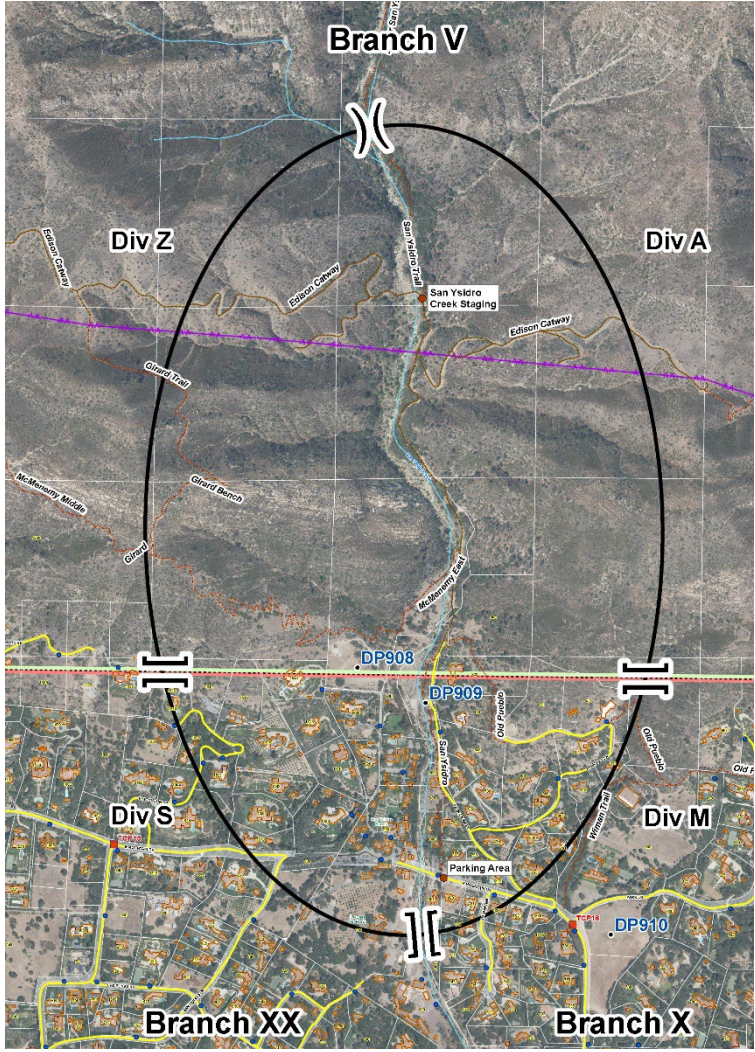
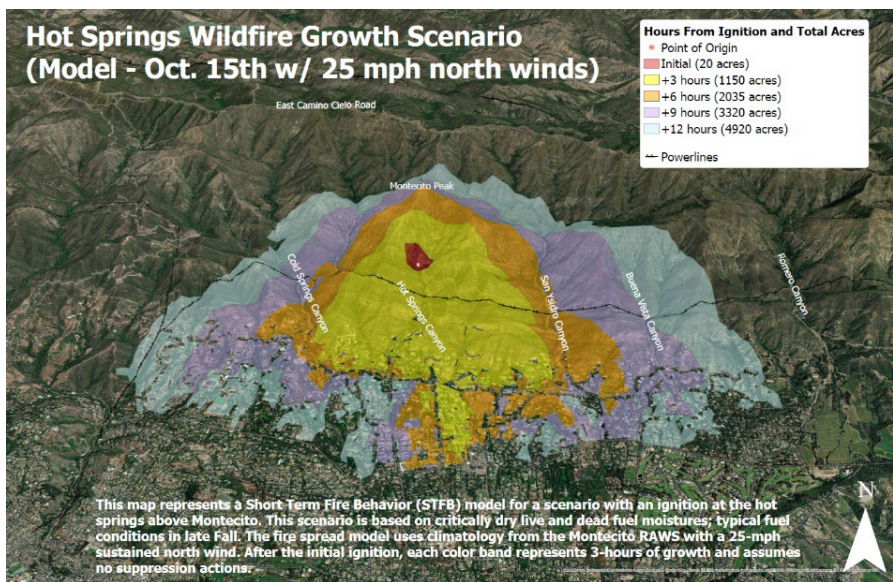


SAN YSIDRO CANYON PREPLAN - Wind Driven Event

Location	San Ysidro Canyon North of HWY 192 - East of Hot Springs Canyon to Buena Vista Canyon																																																					
ICP	INITIAL: BC Vehicle/MTO Station 91 (595 San Ysidro Rd) EXTENDED: MTO Station 91 (595 San Ysidro Rd)																																																					
Preplan Zone	XSBC 906W / MTO San Ysidro Canyon																																																					
Lat/Long; W3W ; USNG	34 27.008'N 119 37.300'W ; ///breakdown.asleep.keepers ; 11S KU 59150 15188																																																					
USGS Topo Quad	Santa Barbara																																																					
Jurisdiction (DPA)	State: Highway 192 to ~928 Park Ln West Fed: North of 928 Park Ln West																																																					
Structures & Population	Occupied Structures: ~2717 Population: ~3074																																																					
Objectives	<ul style="list-style-type: none"> - Firefighter and Civilian Safety - Provide for evacuation of the public - Protect structures - Provide for evacuation of horses and other livestock <ul style="list-style-type: none"> - Keep Fire North of Highway 192 - Keep Fire South of Camino Cielo Rd - Keep Fire East of Hot Springs Canyon - Keep Fire West of Buena Vista Canyon 		 PreAttack Plans/Maps																																																			
SRA 1st Alarm High Resp. Level	SBC - 4 T-3 ENG, 1 WT, 2 CRW, 2 DZ, 1 BC, 1 Helicopter, 1 AA, 2 AT; STB: 1 T-3 ENG, 1 T-1 ENG, 1 BC MTO - 1 T-3 ENG, 1 T-1 ENG, 1 T-6 ENG, 1 BC; CRP: 1 T-3 ENG, 1 BC LPF - 3 T-3 ENG, 1 WT, 1 CRW, 1 DZ, 1 BC, 1 FPT		<table border="1" style="font-size: small;"> <tr><th>T-1</th><th>T-3</th><th>T-6</th><th>CRW</th><th>DOZ</th><th>WT</th><th>HEL</th><th>BC</th><th>AT</th></tr> <tr><td>2</td><td>10</td><td>2</td><td>3</td><td>3</td><td>1</td><td>1</td><td>5</td><td>2</td></tr> </table>	T-1	T-3	T-6	CRW	DOZ	WT	HEL	BC	AT	2	10	2	3	3	1	1	5	2																																	
T-1	T-3	T-6	CRW	DOZ	WT	HEL	BC	AT																																														
2	10	2	3	3	1	1	5	2																																														
Reinforced Response	SBC - Second Alarm equal to Initial Attack Assignment + 1 DC; +2 AT; Open Expanded																																																					
FRA 1st Alarm High Resp. Level	SBC - 4 T-3 ENG, 1 WT, 2 CRW, 2 DZ, 1 BC; STB: 1 T-3 ENG, 1 T-1 ENG, 1 BC LPF - 5 T-3 ENG, 2 WT, 2 CRW, 2 DZ, 1 BC, 1 DC, 2 FPT, 2 HELO, 1 HT, 1 AA, 2 AT MTO - 1 T-3 ENG, 1 T-1 ENG, 1 T-6 ENG, 1 BC; CRP: 1 T-3 ENG, 1 BC		<table border="1" style="font-size: small;"> <tr><th>T-1</th><th>T-3</th><th>T-6</th><th>CRW</th><th>DOZ</th><th>WT</th><th>HEL</th><th>BC</th><th>AT</th></tr> <tr><td>2</td><td>12</td><td>1</td><td>4</td><td>4</td><td>3</td><td>2</td><td>6</td><td>2</td></tr> </table>	T-1	T-3	T-6	CRW	DOZ	WT	HEL	BC	AT	2	12	1	4	4	3	2	6	2																																	
T-1	T-3	T-6	CRW	DOZ	WT	HEL	BC	AT																																														
2	12	1	4	4	3	2	6	2																																														
Mutual Threat Zone by DPA	<table border="1" style="font-size: x-small; border-collapse: collapse;"> <tr><th colspan="2">SRA / LRA DPA</th><th>T-1</th><th>T-3</th><th>T-6</th><th>CRW</th><th>DOZ</th><th>WT</th><th>HEL</th><th>BC</th><th>AA</th><th>AT</th><th>INV</th></tr> <tr><td>2</td><td>10</td><td>2</td><td>3</td><td>3</td><td>1</td><td>1</td><td>6</td><td>1</td><td>2</td><td>1</td><td></td><td></td></tr> </table>	SRA / LRA DPA		T-1	T-3	T-6	CRW	DOZ	WT	HEL	BC	AA	AT	INV	2	10	2	3	3	1	1	6	1	2	1			<table border="1" style="font-size: x-small; border-collapse: collapse;"> <tr><th colspan="2">FRA DPA</th><th>T-1</th><th>T-3</th><th>T-6</th><th>CRW</th><th>DOZ</th><th>WT</th><th>HEL</th><th>BC</th><th>AA</th><th>AT</th><th>INV</th></tr> <tr><td>2</td><td>12</td><td>2</td><td>4</td><td>4</td><td>3</td><td>3</td><td>6</td><td>1</td><td>2</td><td>2</td><td></td><td></td></tr> </table>	FRA DPA		T-1	T-3	T-6	CRW	DOZ	WT	HEL	BC	AA	AT	INV	2	12	2	4	4	3	3	6	1	2	2		
SRA / LRA DPA		T-1	T-3	T-6	CRW	DOZ	WT	HEL	BC	AA	AT	INV																																										
2	10	2	3	3	1	1	6	1	2	1																																												
FRA DPA		T-1	T-3	T-6	CRW	DOZ	WT	HEL	BC	AA	AT	INV																																										
2	12	2	4	4	3	3	6	1	2	2																																												
LRA 1st Alarm High Resp. Level	MTO - 1 T-3 ENG, 1 T-1 ENG, 1 T-6 ENG, 1 BC CRP - 1 T-3 ENG, 1, 1 BC SBC - 1 T-3 ENG; STB - 1 T-3 ENG, 1 T-1 ENG, 1 BC LPF - 3 T-3 ENG, 1 DZ, 1 CRW, 1 WT, 1 FPT, 1 BC		<table border="1" style="font-size: small;"> <tr><th>T-1</th><th>T-3</th><th>T-6</th><th>CRW</th><th>DOZ</th><th>WT</th><th>HEL</th><th>BC</th><th>AT</th></tr> <tr><td>2</td><td>7</td><td>1</td><td>1</td><td>1</td><td>1</td><td>0</td><td>4</td><td>0</td></tr> </table>	T-1	T-3	T-6	CRW	DOZ	WT	HEL	BC	AT	2	7	1	1	1	1	0	4	0																																	
T-1	T-3	T-6	CRW	DOZ	WT	HEL	BC	AT																																														
2	7	1	1	1	1	0	4	0																																														
Reinforced Response	MTO - Additional Operational Area resources by request																																																					
Staging Area	<ol style="list-style-type: none"> 1. Westmont College (50+ Engines) 955 La Paz Rd 2. DP 53/910 (50 Engines) Field south of 809 Park Lane (access into San Ysidro Canyon) 3. Regency Innovations (30 Engines) 100 Innovation Place 																																																					
Communications	Command SBC C4 or SBC C6 LPF FN(Tone 3 La Cumbre ; 131.8) or (Tone 16 Santa Cruz Island; 192.8) Tactical CDF T11 CDF T4 VFIRE 22 VFIRE 23 VFIRE 26 LPF T3(168.2625) LPF T4(168.1250) Air to Ground CDF AG1(151.2200) CDF AG2(159.2625) FSR5 AG41(167.4750)																																																					
Traffic Control Points	<ul style="list-style-type: none"> - TCP 10 Sycamore Cyn @ E. Valley Rd - TCP 11 Hot Springs @ Hwy 192 - TCP 12 E Mountain Dr @ Hot Springs Rd 		<ul style="list-style-type: none"> - TCP 14 San Ysidro Rd @ Hwy 192 - TCP 15 Park Lane @ Hwy 192 - TCP 17 Sheffield Dr @ Hwy 192 																																																			
Evacuation	Institute Law Branch EARLY .																																																					
Civilian Collection Point	Earl Warren Showground Las Positas Rd @ HWY 101																																																					
Possible Additional Resources Needed (After 1st and 2nd Alarms)																																																						
Engines - Type 3	8 Strike Teams	Air Resources	6 Type 2 Air tankers; Mobile Retardant Base																																																			
Engines - Type 1/2	15 Strike Teams	Helicopters	8 Type 2, 4 Type 1 Helicopters																																																			
Handcrews	8 Type 1 S/T Crews	Watertenders	6 Water Tenders																																																			
Dozers	4 S/T Type 2 Dozers	Overhead	6 OPBD, 8 DIVS, 4 SOFR, 4 FOBS, 2 STAM																																																			
Consequences of Escape	<ol style="list-style-type: none"> 1. Fire spreads south over HWY 192 into the community of Montecito, suburban residential & light commercial. 2. Fire spreads southwest threatening Montecito; area is primarily interface, suburban. Last burned in 2008 Tea Fire. 3. Fire spreads southeast threatening Montecito; area is interface, suburban. Last burned: 2017 Thomas Fire. 4. Fire spreads north over Camino Cielo to heavy continuous fuel on north slope of Santa Ynez Mountains. 																																																					
Notification of Potential Evacuation	<ol style="list-style-type: none"> 1. Zone MTO 907, 909 – Hot Springs Cyn to Buena Vista Cyn – Consider Evacuation Order 2. Zone MTO 923, 929 – Hot Springs Rd to Buena Vista Dr – Consider Evacuation Order 3. Zone MTO 905, 919 – Cold Spring Cyn to Hot Springs Cyn – Consider Evacuation Warning; Adjust for wind direction 4. Zones MTO 911, 933 – Buena Vista Cyn to Romero Cyn – Consider Evacuation Warning; Adjust for wind direction 5. Zones MTO 925, 927, 931 – Consider Evacuation Warning 																																																					
Fire History	2017: Thomas Fire burned 281,893 acres: Jesusita/Tea Fires to county line 2009: Jesusita Fire burned 8,733 acres: HWY 154 to Gibraltar Rd/ Tea Fire 2008: Tea Fire burned 1,940 acres: Gibraltar Rd to Cold Spring Creek 1971: Romero Canyon Fire burned 15,600 acres in Romero Canyon; 4 firefighter fatalities occurred 1964: Coyote Fire burned 67,000 acres: HWY 154 to Rincon Creek																																																					
Special Hazards	<ol style="list-style-type: none"> 1. Front Country canyons aligned with <i>sundowner</i> wind conditions. 2. Narrow winding roads and driveways. Minimal turnarounds. 3. Congested area with large civilian population and limited access and egress. 4. Minimal Safety Zones or Safe Refuge Areas. 5. Numerous structures with poor defensible space. 6. Thermal belt conditions exist at mid slope of Santa Ynez Mtns. 7. Steep drainages oriented north and south. Structures located on all slope aspects. 8. Power lines throughout the operational area. 9. Mountain Drive is a Mid-slope road. 10. Confluence of multiple Fire Jurisdictions complicates command and control. Establish Unified Command. 																																																					

SAN YSIDRO CANYON OPERATIONS - Wind Driven Event

Operational Structure	<ul style="list-style-type: none"> 3 Branches: Branch V FRA, Branch X / XX SRA/DPA. Consider a 4th – Law Branch 4 Divs: Div Alpha, Mike, Sierra, Zulu 	
Operational Priorities	<ul style="list-style-type: none"> Civilian Evacuation Branch V <ul style="list-style-type: none"> Div A / Div Z <ul style="list-style-type: none"> Anchor and effect perimeter control on flanks, once possible Control the heel collaborating with Div A/Z Point protection at structures as necessary Plan for E. Camino Cielo contingency Branch X / XX <ul style="list-style-type: none"> Div M / Div S <ul style="list-style-type: none"> Immediately plan for and implement evacuations Assign engines and Strike Teams to neighborhoods as available Plan for medical emergencies Stage appropriate equipment Plan for contingencies and additional Divisions Law Branch <ul style="list-style-type: none"> Staff TCPs and assist in evacuation/notifications 	 <p>PreAttack Plans/Maps</p>
Basic Fire Behavior Expectations (2024)	<ul style="list-style-type: none"> Fire behavior will be dependent on the time of year, with the highest intensity and resistance to control coming in the fall months. Aircraft will be effective in the lighter fuel loads since the 2017 Thomas fire burned most of the vegetation. Anticipate fire behavior to moderate overnight with the marine influence. Pay attention to the weather forecast and the potential for sundowner winds...plan accordingly. 	
Immediate Operational Resource Needs	<ul style="list-style-type: none"> Branch V <ul style="list-style-type: none"> Div A / Div Z <ul style="list-style-type: none"> Type 1 Crews Type 2 Dozers Engines or pumping platform as possible <ul style="list-style-type: none"> Type 3 or Type 6 Multiple portable tanks (relay or helicopter fill) Engines for patrol/prep at structures <ul style="list-style-type: none"> Type 1, 3, or 6 Utilize aircraft to assist with securing the edge and making direct attack feasible With Div A/Z, plan for and prep contingency on E. Camino Cielo Branch X / XX <ul style="list-style-type: none"> Div M / Div S <ul style="list-style-type: none"> Crews and Dozers in staging for assignment where needed (use UTVs for scouting/spotting) Aircraft to provide point protection and perimeter control where possible Engines (Type 1, 3, 6) for structure defense Water Tenders for support Law Enforcement Ambulance(s) Law Branch <ul style="list-style-type: none"> 1 supervisor at ICP 6+ units for TCP staffing Multiple units for evacuation and control SAR for evacuation assistance 	



Coordinate with Air Attack for night flying resources. Potential options are:

- 1, 2, or 3 Type 1 helicopters for retardant/water, night capable
 - HT40 (Camarillo) -VNC
 - HT47 (Fox) - LAC
 - HT55 (Van Nuys) - LAC
 - Intel 76
- Mobile Retardant Base