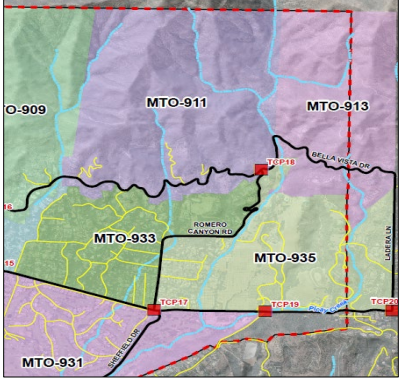


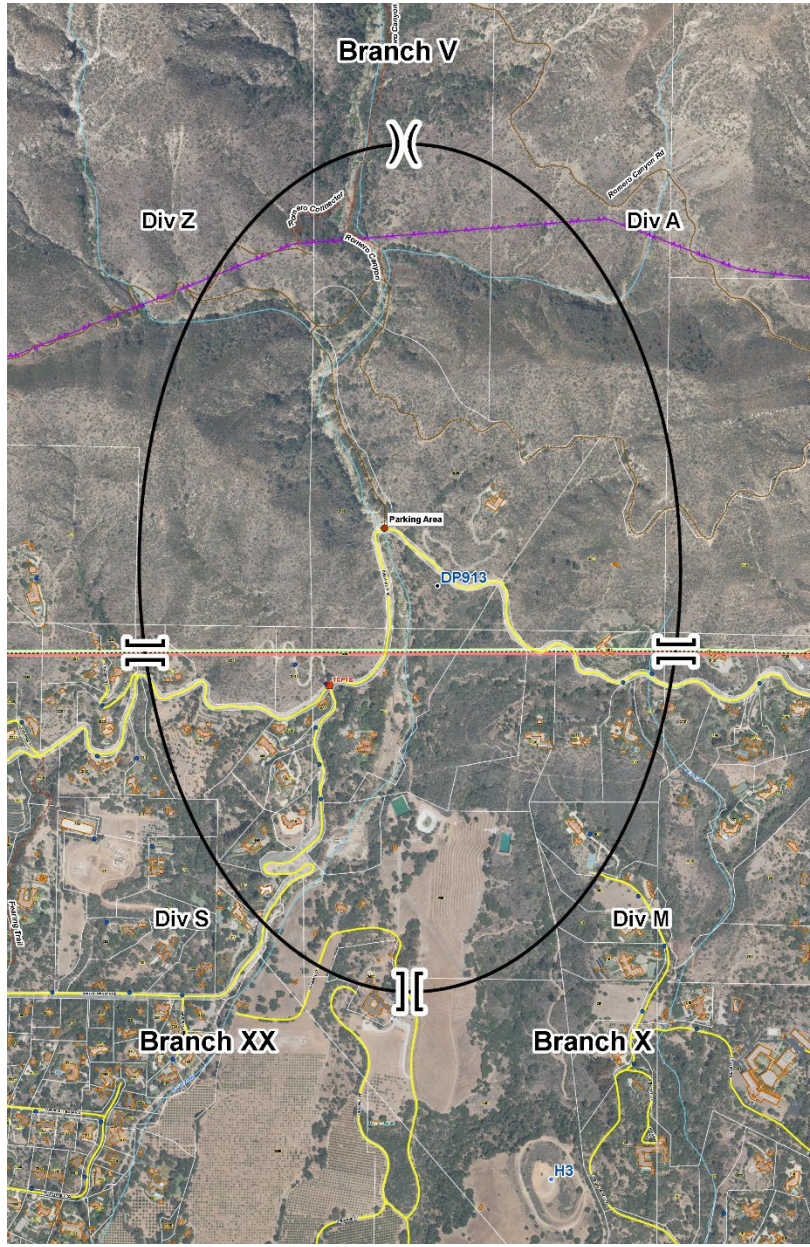


# ROMERO CANYON PREPLAN - Wind Driven Event

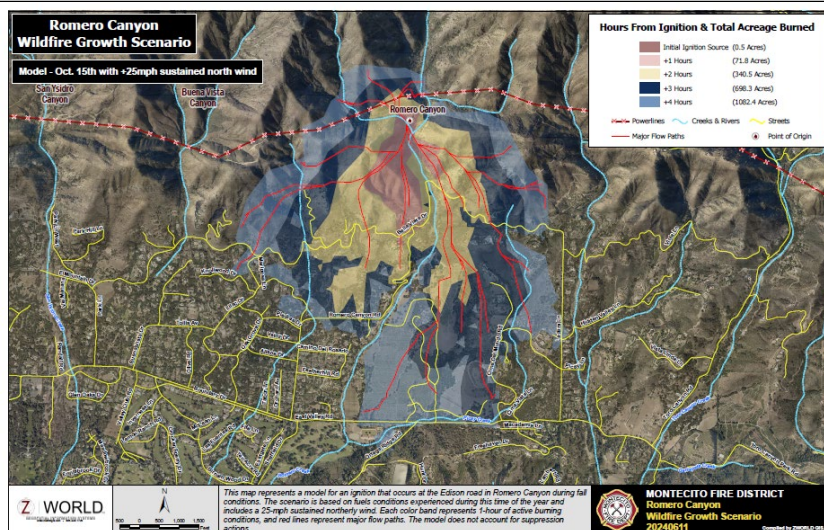
<b>Location</b>	<b>Romero Canyon North of HWY 192</b> - East of Romero Canyon to District Boundary																																																					
<b>ICP</b>	<b>INITIAL:</b> BC Vehicle/MTO Station 91 (595 San Ysidro Rd) <b>EXTENDED:</b> MTO Station 91 (595 San Ysidro Rd)																																																					
<b>Preplan Zone</b>	<b>XSBC 910T / MTO Romero Canyon</b>																																																					
<b>Lat/Long; W3W ; USNG</b>	34 27.753'N 119 35.470' ; ///slugs.squashes.erode ; 11S KU 61986 16491																																																					
<b>USGS Topo Quad</b>	Santa Barbara																																																					
<b>Jurisdiction (DPA)</b>	<b>State:</b> Highway 192 to ~ 2500 Bella Vista <b>Fed:</b> North of 2500 Bella Vista																																																					
<b>Structures &amp; Population</b>	<b>Occupied Structures:</b> ~524 <b>Population:</b> ~520																																																					
<b>Objectives</b>	<ul style="list-style-type: none"> <li>- Firefighter and Civilian Safety</li> <li>- Provide for evacuation of the public</li> <li>- Protect structures</li> <li>- Provide for evacuation of horses and other livestock</li> </ul> <div style="display: flex; align-items: center; margin-top: 10px;"> <ul style="list-style-type: none"> <li>- Keep Fire <b>North of Highway 192</b></li> <li>- Keep Fire <b>South of Camino Cielo Rd</b></li> <li>- Keep Fire <b>East of Buena Vista Canyon</b></li> <li>- Keep Fire <b>West of Toro Canyon</b></li> </ul> <div style="font-size: 2em;">}</div> </div>		 <b>PreAttack Plans/Maps</b>																																																			
<b>SRA 1st Alarm High Resp. Level</b>	<b>SBC</b> - 4 T-3 ENG, 1 WT, 2 CRW, 2 DZ, 1 BC, 1 Helicopter, 1 AA, 2 AT; <b>STB:</b> 1 T-3 ENG, 1 T-1 ENG, 1 BC <b>MTO</b> - 1 T-3 ENG, 1 T-1 ENG, 1 T-6 ENG, 1 BC; <b>CRP:</b> 1 T-3 ENG, 1 BC <b>LPF</b> - 3 T-3 ENG, 1 WT, 1 CRW, 1 DZ, 1 BC, 1 FPT		<table border="1" style="font-size: 0.8em;"> <tr><th>T-1</th><th>T-3</th><th>T-6</th><th>CRW</th><th>DOZ</th><th>WT</th><th>HEL</th><th>BC</th><th>AT</th></tr> <tr><td>2</td><td>10</td><td>1</td><td>3</td><td>3</td><td>1</td><td>1</td><td>5</td><td>2</td></tr> </table>	T-1	T-3	T-6	CRW	DOZ	WT	HEL	BC	AT	2	10	1	3	3	1	1	5	2																																	
T-1	T-3	T-6	CRW	DOZ	WT	HEL	BC	AT																																														
2	10	1	3	3	1	1	5	2																																														
<b>Reinforced Response</b>	SBC - Second Alarm equal to Initial Attack Assignment + 1 DC; +2 AT; Open Expanded																																																					
<b>FRA 1st Alarm High Resp. Level</b>	<b>SBC</b> - 4 T-3 ENG, 1 WT, 2 CRW, 2 DZ, 1 BC; <b>STB:</b> 1 T-3 ENG, 1 T-1 ENG, 1 BC <b>LPF</b> - 5 T-3 ENG, 2 WT, 2 CRW, 2 DZ, 1 BC, 1 DC, 2 FPT, 2 HELO, 1 HT, 1 AA, 2 AT <b>MTO</b> - 1 T-3 ENG, 1 T-1 ENG, 1 T-6 ENG, 1 BC; <b>CRP:</b> 1 T-3 ENG, 1 BC		<table border="1" style="font-size: 0.8em;"> <tr><th>T-1</th><th>T-3</th><th>T-6</th><th>CRW</th><th>DOZ</th><th>WT</th><th>HEL</th><th>BC</th><th>AT</th></tr> <tr><td>2</td><td>12</td><td>1</td><td>4</td><td>4</td><td>3</td><td>2</td><td>6</td><td>2</td></tr> </table>	T-1	T-3	T-6	CRW	DOZ	WT	HEL	BC	AT	2	12	1	4	4	3	2	6	2																																	
T-1	T-3	T-6	CRW	DOZ	WT	HEL	BC	AT																																														
2	12	1	4	4	3	2	6	2																																														
<b>Mutual Threat Zone by DPA</b>	<table border="1" style="font-size: 0.7em;"> <tr><th colspan="2">SRA / LRA DPA</th><th>T-1</th><th>T-3</th><th>T-6</th><th>CRW</th><th>DOZ</th><th>WT</th><th>HEL</th><th>BC</th><th>AA</th><th>AT</th><th>INV</th></tr> <tr><td>2</td><td>10</td><td>2</td><td>3</td><td>3</td><td>1</td><td>1</td><td>6</td><td>1</td><td>2</td><td>1</td><td></td><td></td></tr> </table>	SRA / LRA DPA		T-1	T-3	T-6	CRW	DOZ	WT	HEL	BC	AA	AT	INV	2	10	2	3	3	1	1	6	1	2	1			<table border="1" style="font-size: 0.7em;"> <tr><th colspan="2">FRA DPA</th><th>T-1</th><th>T-3</th><th>T-6</th><th>CRW</th><th>DOZ</th><th>WT</th><th>HEL</th><th>BC</th><th>AA</th><th>AT</th><th>INV</th></tr> <tr><td>2</td><td>12</td><td>2</td><td>4</td><td>4</td><td>3</td><td>3</td><td>6</td><td>1</td><td>2</td><td>2</td><td></td><td></td></tr> </table>	FRA DPA		T-1	T-3	T-6	CRW	DOZ	WT	HEL	BC	AA	AT	INV	2	12	2	4	4	3	3	6	1	2	2		
SRA / LRA DPA		T-1	T-3	T-6	CRW	DOZ	WT	HEL	BC	AA	AT	INV																																										
2	10	2	3	3	1	1	6	1	2	1																																												
FRA DPA		T-1	T-3	T-6	CRW	DOZ	WT	HEL	BC	AA	AT	INV																																										
2	12	2	4	4	3	3	6	1	2	2																																												
<b>LRA 1st Alarm High Resp. Level</b>	<b>MTO</b> - 1 T-3 ENG, 1 T-1 ENG, 1 T-6 ENG, 1 BC <b>CRP</b> - 1 T-3 ENG, 1 BC <b>SBC</b> - 1 T-3 ENG; <b>STB</b> - 1 T-3 ENG, 1 T-1 ENG, 1 BC <b>LPF</b> - 3 T-3 ENG, 1 DZ, 1 CRW, 1 WT, 1 FPT, 1 BC		<table border="1" style="font-size: 0.8em;"> <tr><th>T-1</th><th>T-3</th><th>T-6</th><th>CRW</th><th>DOZ</th><th>WT</th><th>HEL</th><th>BC</th><th>AT</th></tr> <tr><td>2</td><td>7</td><td>1</td><td>1</td><td>1</td><td>1</td><td>0</td><td>4</td><td>0</td></tr> </table>	T-1	T-3	T-6	CRW	DOZ	WT	HEL	BC	AT	2	7	1	1	1	1	0	4	0																																	
T-1	T-3	T-6	CRW	DOZ	WT	HEL	BC	AT																																														
2	7	1	1	1	1	0	4	0																																														
<b>Reinforced Response</b>	MTO - Additional Operational Area resources by request																																																					
<b>Staging Area</b>	<ol style="list-style-type: none"> <li>1. <b>Regency Innovation Place LLC</b> (30 Engines) 100 Innovation Place</li> <li>2. <b>DP 53/910</b> (50 Engines) Field south of 809 Park Lane (access into San Ysidro Canyon)</li> <li>3. <b>Westmont College</b> (50+ Engines) 955 La Paz Rd</li> </ol>																																																					
<b>Communications</b>	<b>Command</b> SBC C4 or SBC C6 <b>LPF FN (Tone 3 La Cumbre; 131.8) or (Tone 16 Santa Cruz Island; 192.8)</b> <b>Tactical</b> CDF T11 CDF T4 VFIRE 22 VFIRE 23 VFIRE 26 <b>LPF T3 (168.2625) LPF T4 (168.1250)</b> <b>Air to Ground</b> CDF AG1(151.2200) CDF AG2(159.2625) <b>FSR5 AG41(167.4750)</b>																																																					
<b>Traffic Control Points</b>	<ul style="list-style-type: none"> <li>- TCP 17 East Valley Rd @ Romero Canyon - TCP 20 East Valley Rd @ Ladera Ln</li> <li>- TCP 18 Bella Vista Dr @ Romero Canyon</li> <li>- TCP 19 East Valley Rd @ Ortega Ridge</li> </ul>																																																					
<b>Evacuation</b>	Institute Law Branch <b>EARLY</b> .																																																					
<b>Civilian Collection Point</b>	<b>Earl Warren Showground</b> Las Positas Rd @ HWY 101																																																					
<b>Possible Additional Resources Needed (After 1st and 2nd Alarms)</b>																																																						
<b>Engines - Type 3</b>	8 Strike Teams	<b>Air Resources</b>	6 Type 2 Air tankers; Mobile Retardant Base																																																			
<b>Engines - Type 1/2</b>	15 Strike Teams	<b>Helicopters</b>	8 Type 2, 4 Type 1 Helicopters																																																			
<b>Handcrews</b>	8 Type 1 S/T Crews	<b>Watertenders</b>	6 Water Tenders																																																			
<b>Dozers</b>	4 S/T Type 2 Dozers	<b>Overhead</b>	6 OPBD, 8 DIVS, 4 SOFR, 4 FOBS, 2 STAM																																																			
<b>Consequences of Escape</b>	<ol style="list-style-type: none"> <li>1. Fire spreads south over HWY 192 into the community of Montecito, suburban residential &amp; light commercial.</li> <li>2. Fire spreads west threatening Buena Vista Cyn; area is primarily intermix. Last burned: 2017 Thomas Fire.</li> <li>3. Fire spreads east threatening Toro Cyn; primarily intermix. Last burned: 2017 Thomas Fire.</li> <li>4. Fire spreads north over Camino Cielo to heavy continuous fuel on north slope of Santa Ynez Mountains.</li> </ol>																																																					
<b>Notification of Potential Evacuation</b>	<ol style="list-style-type: none"> <li>1. Zone MTO 911 – Buena Vista Cyn to Romero Cyn – Consider Evacuation Order</li> <li>2. Zone MTO 913 – Romero Cyn to Toro Cyn – Consider Evacuation Order</li> <li>3. Zone MTO 933 – Buena Vista Cyn to Romero Cyn – Consider Evacuation Order</li> <li>4. Zone MTO 935 – Romero Cyn to Ladera Lane – Consider Evacuation Order</li> <li>5. Zone CRP 951 – Ladera Lane to Toro Cyn – Consider Evacuation Warning</li> <li>6. Zones MTO 931, CRP 959, 961 – Sheffield Drive and Summerland Community – Consider Evacuation Warning</li> </ol>																																																					
<b>Fire History</b>	<b>2017:</b> Thomas Fire burned 281,893 acres: Jesusita/Tea Fires to county line <b>2009:</b> Jesusita Fire burned 8,733 acres: HWY 154 to Gibraltar Rd/ Tea Fire <b>2008:</b> Tea Fire burned 1,940 acres: Gibraltar Rd to Cold Springs Creek <b>1971:</b> Romero Canyon Fire burned 15,600 acres in Romero Canyon; 4 firefighter fatalities occurred <b>1964:</b> Coyote Fire burned 67,000 acres: HWY 154 to Rincon Creek																																																					
<b>Special Hazards</b>	<ol style="list-style-type: none"> <li>1. Front Country canyons aligned with <i>sundowner</i> wind conditions.</li> <li>2. Narrow winding roads and driveways. Minimal turnarounds.</li> <li>3. Congested area with large civilian population and limited access and egress.</li> <li>4. Minimal Safety Zones or Safe Refuge Areas.</li> <li>5. Numerous structures with poor defensible space.</li> <li>6. Thermal belt conditions exist at mid slope of Santa Ynez Mtns.</li> <li>7. Steep drainages oriented north and south. Structures located on all slope aspects.</li> <li>8. Power lines throughout the operational area.</li> <li>9. Mountain Drive is a <b>Mid-slope road</b>.</li> <li>10. <b>Confluence of multiple Fire Jurisdictions complicates command and control. Establish Unified Command.</b></li> </ol>																																																					

# ROMERO CANYON OPERATIONS - Wind Driven Event

<b>Operational Structure</b>	<ul style="list-style-type: none"> <li>3 Branches: One Branch Break at SRA/FRA line. Branch V FRA, Branch X and XX SRA. Consider a 4<sup>th</sup> – Law Branch</li> <li>4 Divs: Div Alpha, Mike, Sierra, Zulu</li> </ul>	
<b>Operational Priorities</b>	<ul style="list-style-type: none"> <li>Civilian Evacuation</li> <li>Branch V                             <ul style="list-style-type: none"> <li>Div A / Div Z                                     <ul style="list-style-type: none"> <li>Anchor and effect perimeter control on flanks, once possible</li> <li>Control the heel collaborating with Div A/Z</li> <li>Point protection at structures as necessary</li> <li>Plan for E. Camino Cielo contingency</li> </ul> </li> </ul> </li> <li>Branch X / XX                             <ul style="list-style-type: none"> <li>Div M / Div S                                     <ul style="list-style-type: none"> <li>Immediately plan for and implement evacuations</li> <li>Assign engines and strike teams to neighborhoods as available</li> <li>Plan for medical emergencies</li> <li>Stage appropriate equipment</li> <li>Plan for contingencies and additional Divisions</li> </ul> </li> </ul> </li> <li>Law Branch                             <ul style="list-style-type: none"> <li>Staff TCPs and assist in evacuation/notifications</li> </ul> </li> </ul>	
<b>Basic Fire Behavior Expectations (2024)</b>	<ul style="list-style-type: none"> <li>Fire behavior will be dependent on the time of year, with the highest intensity and resistance to control coming in the fall months.</li> <li>Aircraft will be effective in the lighter fuel loads since the 2017 Thomas fire burned most of the vegetation.</li> <li>Anticipate fire behavior to moderate overnight with the marine influence.</li> <li>Pay attention to the weather forecast and the potential for sundowner winds...plan accordingly.</li> </ul>	
<b>Immediate Operational Resource Needs</b>	<ul style="list-style-type: none"> <li>Branch V                             <ul style="list-style-type: none"> <li>Div A / Div Z                                     <ul style="list-style-type: none"> <li>Type 1 Crews</li> <li>Type 2 Dozers</li> <li>Engines or pumping platform as possible   <ul style="list-style-type: none"> <li>Type 3 or Type 6</li> <li>Multiple portable tanks (relay or helicopter fill)</li> </ul> </li> <li>Engines for patrol/prep at structures   <ul style="list-style-type: none"> <li>Type 1, 3, or 6</li> </ul> </li> <li>Utilize aircraft to assist with securing the edge and making direct attack feasible</li> <li>With Div A/Z, plan for and prep contingency on E. Camino Cielo</li> </ul> </li> <li>Branch X / XX                             <ul style="list-style-type: none"> <li>Div M / Div S                                     <ul style="list-style-type: none"> <li>Crews and Dozers in staging for assignment where needed (use UTVs for scouting/spotting)</li> <li>Aircraft to provide point protection and perimeter control where possible</li> <li>Engines (Type 1, 3, 6) for structure defense</li> <li>Water Tenders for support</li> <li>Law Enforcement</li> <li>Ambulance(s)</li> </ul> </li> </ul> </li> <li>Law Branch                             <ul style="list-style-type: none"> <li>1 supervisor at ICP</li> <li>6+ units for TCP staffing</li> <li>Multiple units for evacuation and control</li> <li>SAR for evacuation assistance</li> </ul> </li> </ul> </li></ul>	



PreAttack Plans/Maps



Coordinate with Air Attack for night flying resources. Potential options are:

- 1, 2, or 3 Type 1 helicopters for retardant/water, night capable
  - HT40 (Camarillo) -VNC
  - HT47 (Fox) - LAC
  - HT55 (Van Nuys) - LAC
  - Intel 76
- Mobile Retardant Base